



updated 08.02.2011
application version: 00.080211

USER MANUAL ZeelProg PPV-RG

Supported control units: **PPV-RG**

ZeelProg is PC application for programming ZEELTRONIC engine *control units*.
For programming special PC-USB programmer is needed.

- **ZeelProg** automatically detects PC-USB programmer connection and enables all functions (without PC-USB programmer, **ZeelProg** application is locked).
- **ZeelProg** automatically detects type of engine *control unit* connected to PC-USB programmer.

CONTENT

<i>ZeelProg</i> SOFTWARE INSTALLATION GUIDE	3
<i>ZeelProg</i> USER INTERFACE	3
<u>Auto detection</u>	3
<u>Menu structure</u>	4
<u>PV Parameters</u>	5
PROGRAMMING AND SETTING NEW PARAMETERS	5
<u>Changing control unit parameters</u>	5
<u>Make new *.zee file without connecting control unit</u>	6
MONITOR FUNCTION	6

ZeelProg SOFTWARE INSTALLATION GUIDE

CD content:

- driver (USB programmer driver)
- NET Framework
- ZeelProg

Software can be also downloaded from web site:

<http://www.zeeltronic.com/page/zeelprog.php>

ZeelProg application can be installed on Windows XP/Vista.
"NET Framework 3.5" needs to be installed.

Installation:

- ① Insert CD-ROM and browse content.
- ② Install USB programmer driver with running "CDM20600.exe" from CD-ROM "driver" directory.
- ③ Install **ZeelProg** with running "setup ZeelProg.exe" from CD-ROM "ZeelProg" directory.

If **ZeelProg** does not start, install "NET Framework" from CD-ROM "NET Framework" directory.

ZeelProg USER INTERFACE

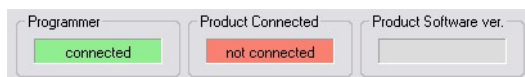
Auto detection

Zeelprog automatically detects USB-Programmer connection and type of *control unit*.

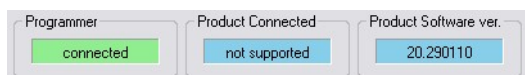
⇒ Programmer connected, product (*control unit*) connected:



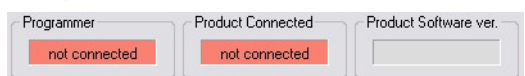
⇒ Programmer connected, product (*control unit*) not connected:



⇒ Programmer connected, product (*control unit*) not supported:



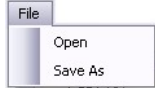
⇒ Programmer not connected, product (*control unit*) not connected:



Menu structure



⇒ **File menu** is active when PC-USB programmer is connected



Open → Open an existing *.zee file

Save As → Save all parameters to *.zee file

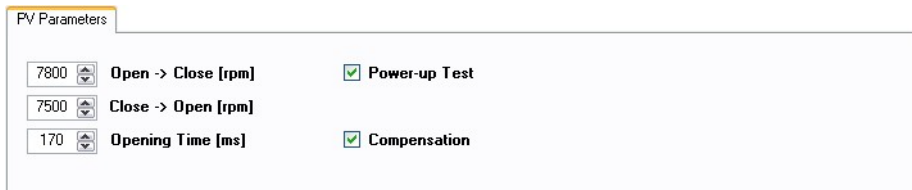
⇒ **Monitor** is active when *control unit* is connected to PC-USB programmer. Clicking on the **Monitor** opens Monitor window.



⇒ Clicking on **About** opens About window and show some basic information about **ZeelProg** application.



PV Parameters



7800	Open -> Close [rpm]	<input checked="" type="checkbox"/> Power-up Test
7500	Close -> Open [rpm]	
170	Opening Time [ms]	<input checked="" type="checkbox"/> Compensation

- ⇒ **Open -> Close [rpm]** ... engine revolutions for moving PV valves from open to close position. Revolutions are programmable in 10rpm steps.
- ⇒ **Close -> Open [rpm]** ... engine revolutions for moving PV valves from close to open position. Revolutions are programmable in 10rpm steps.

➔ Important:

"Open -> Close" revolutions must be always higher than "Close -> Open" revolutions!

- ⇒ **Opening Time [ms]** ... opening time is open to close travel time of PV servo. Time is usually from 150ms to 170ms and depends on PV condition. Value is needed for accurate calculation of acceleration compensation.
- ⇒ **Compensation** ... Activated acceleration compensation enables automatic earlier PV closing, to compensate travel time of PV servo. At hard acceleration PV start to close earlier to enable closed position at programmed revs.
- ⇒ **Power-up Test**...enables, or disables PV test at switching on power supply.

PROGRAMMING AND SETTING NEW PARAMETERS

- ➔ While programming or reading, *control unit* does not need to be connected to power supply, because it is supplied through PC-USB programmer.

Changing control unit parameters

- ① Read parameters from connected *control unit*, by pressing **Read** button.



Progress bar indicate read and verify process.

Successful reading is indicated as: 

Error while reading is indicated as: 


If error occurs, then repeat reading.


- ② Change parameters

- ③ Program parameters to connected *control unit*, by pressing **Program** button.



Progress bar indicate program and verify process.

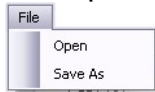
Successful programming is indicated as: 

Error while programming is indicated as: 

If error occurs, then repeat programming.

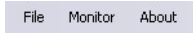
Make new *.zee file without connecting control unit

- ① Connect PC-USB programmer to PC.
- ② Set parameters
- ③ Save parameters by clicking **Save As** from **File menu**.

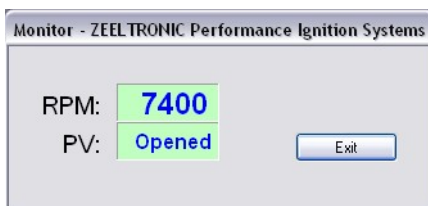


MONITOR FUNCTION

⇒ **Monitor** function is active when *control unit* is connected to PC-USB programmer.



Clicking on **Monitor** opens Monitor window.



⇒ Monitor show engine revolution and PV position.